

FANNING STONE

IMAGINARY PORTRAITS BROCHURE



HENARCH GALLERIES



Henarch Galleries Art Advisory is a trading name of ECHOGAA Ltd. A company registered in England & Wales under company number 12164044. The business & correspondence address is Unit B3 The Courtyard, Dover's Farm, Lonesome Lane, Reigate, Surrey, RH2 7QT. Henarch Galleries Art Advisory is not authorised or regulated by the FCA (Financial Conduct Authority). Works of art are not investments or a specified kind within the scope of the Financial Services and Markets Act 2000 nor are they controlled investments subject to Section 21 of the Financial Services and Market Act 2000 and the Financial Promotion Order. Any and all of the information provided by Henarch Galleries Art Advisory relates to the sale of works of art and their value. Henarch Galleries Art Advisory does not deal with "options", futures or any regulated investments of a specified kind under the Financial Services and Markets Act 2000. No information provided should be deemed to constitute the provision of financial investment or other professional advice subject to regulation under the Financial Services Markets Act 2000.

HENARCH GALLERIES + FINN STONE

Henarch Galleries are pleased to announce the launch of our exclusive collaboration with Finn Stone titled 'Imaginary Portraits'.

Finn has developed a global following over many years, and successfully released several collections which are still thriving today.

We are proud to be given the opportunity to showcase his latest collection and fully expect Finn to reach a whole new level in this thriving Fine Art market.







Finlay

FINN STONE IN HIS NORTH LONDON STUDIO 2022

FINN STONE

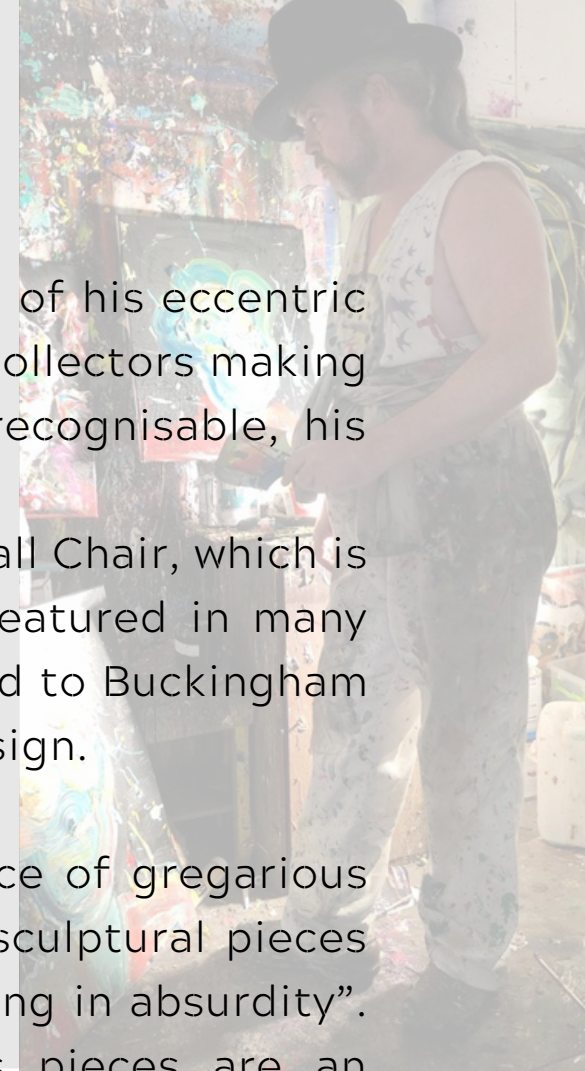
Crediting his eclectic Irish heritage as the source of much of his eccentric creativity, Finn Stone has consistently caught the eyes of collectors making him a contemporary art investment favourite. Instantly recognisable, his pieces are strikingly iconic and very much in demand.

Finn first gained international praise after designing the Ball Chair, which is now considered to be an iconic design classic and has featured in many books about design in history. Subsequently, he was invited to Buckingham Palace to meet the Queen as a representative of British Design.

Stone says of himself that he has “an inexhaustible source of gregarious inspiration” which certainly helps him to create “one off sculptural pieces that are a by-product of his lateral thinking and are dripping in absurdity”. Creating art that is provocative but with humour, his pieces are an instrument of rebellious storytelling - a story about the wild playing of reality.

Finn has previously worked with the likes of Yo Sushi, Clinique, Harvey Nichols, X Box and many more influential brands. In 2021, he exhibited alongside artists such as Banksy, Mr Brainwash, Schoony, Richard Hambleton and Ben Allen in a show presenting some of the best urban and contemporary stars the art world has to offer. His highly regarded work at its current competitive price is especially attractive, and to be considered side by side with Blue Chip artists suggests strong potential upside from a financial viewpoint.

As demand for this artist begins to rise, so will his prices. At present we have an exclusivity agreement with Finn and have worked with him for a number of years so if you are looking to expand your portfolio, we are in a unique position to advise.



IMAGINARY PORTRAITS

In this series entitled 'Imaginary Portraits', Finn explores the act of painting the inner workings of the human mind, conjuring daydreamlike figures in transformative states.

These pieces engage with and excite the audience's gaze - both ambiguous and provocative - a figure of eerie hollowness bearing a resemblance to Van Gogh's many self-portraits.

Whilst merely a suggestion of raw bodily form, the precision with which he directs his brushstrokes leaves us with no uncertainty that this is a recreation of the human species, brimming with careful consideration and chaos.

Avoiding a purely representational approach to reality, Finn merely references the human figure just enough to invite the audience to form the rest of the image in our minds. Inherent bias and conditioning from our own experience sways the viewers interpretations.

Finn has captured both the beauty and the intertwined turmoil - harmoniously somehow. Refusing to conform in the traditional sense, the image we are presented with is a spectre of a human, shaped with lawless brush strokes.



IMAGINARY PORTRAITS



The internal workings of the mind are mysterious. I wanted to capture this process with brush and paint in this series of Imaginary Portraits. The rapid strokes of uncontrolled paint are more led by feelings than design - like capturing a fleeting thought forming in a mind. Paint is applied rapidly with brush, palette knife or thrown directly at the canvas in order to portray a snapshot of the exciting chaotic, machinations of the human thought process.

There is a degree of self-portraiture to the work - an aspect where I am projecting my thoughts onto the canvas, which can be both beautiful and repellent at the same time.

My vision for the collection was to allow the viewer a glimpse into the many facets of the creative mind.



FINN STONE

Finlay.



PREVIOUSLY WORKED WITH

**XBOX
CROCS
CONRAN
YO SUSHI
CLINIQUE
PAUL SMITH
GORDON RAMSAY
HARVEY NICHOLS**



MADDOX GALLERY

IMITATE MODERN

CLERKENWELL DESIGN WEEK

WOOLFF GALLERY

AFFORDABLE ART FAIR

TRINITY GALLERY

PREVIOUSLY EXHIBITED AT:



2016

2018

2018

2019

2022

2022



BY ROYAL INVITATION

In 2004, Finn Stone was one of only 400 hand-selected to take part in a special reception with Her Majesty Queen Elizabeth II



FINN'S AFTERNOON WITH THE QUEEN...



The reason for the invite was because I created a classic piece of design furniture that became a kind of icon- 'the ball chair'.

The celebration was about British design, and it was inside Buckingham Palace where we got to actually talk to the Queen- strangely we spoke about her Corgi dogs and cats- long story!

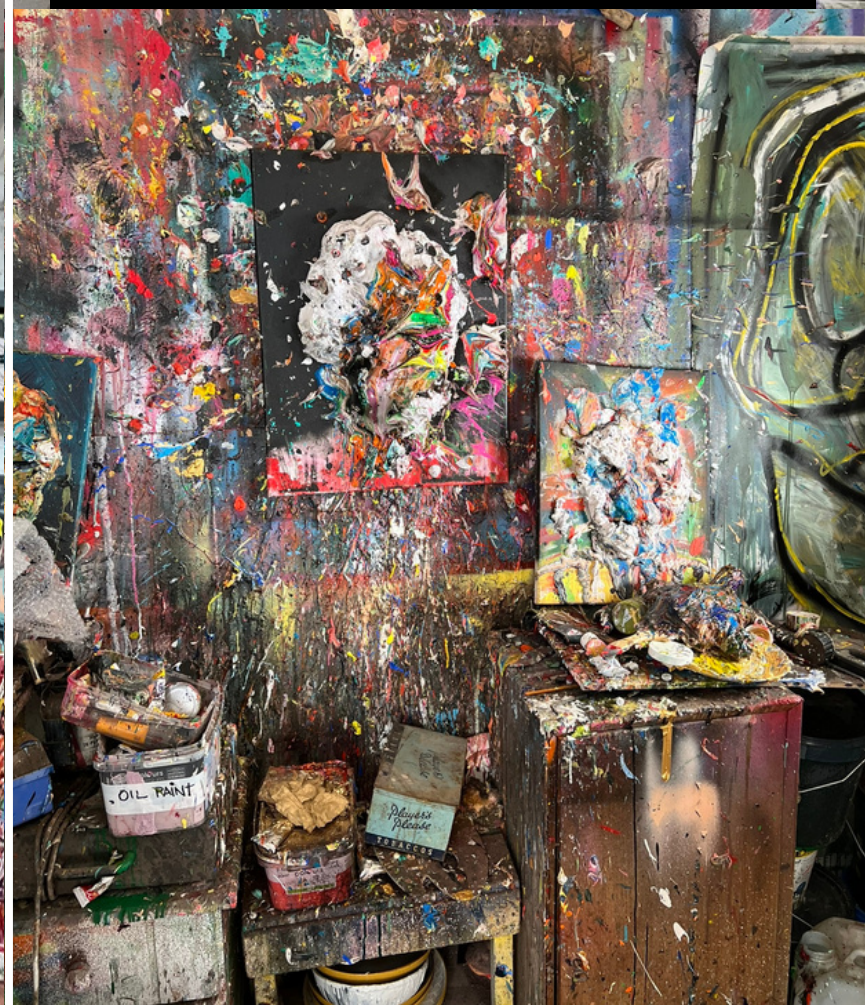


FINN STONE

Finlay.



STUDIO FINN STONE



STATISTICS OF SALE INCREASES

BASED ON FINN STONE'S HIGHEST VALUED ARTWORK AT THAT TIME

2005



£1,350



270%
INCREASE

2010



£5,000



620%
INCREASE

2015



£36,000



233%
INCREASE

2020



£120,000

OVER THE YEARS





IMAGINARY PORTRAITS



CHAOS THEORY

NAME: Chaos Theory, 2019

PROVENANCE: Finn Stone's Studio, North London

MATERIALS: Heavy Body Acrylic on Canvas

COLLECTION: Imaginary Portraits

SIZE: 60 x 50 cm

FRAMED / UNFRAMED: Framed



ELECTRIC EMPEROR

NAME: Electric Emperor, 2022

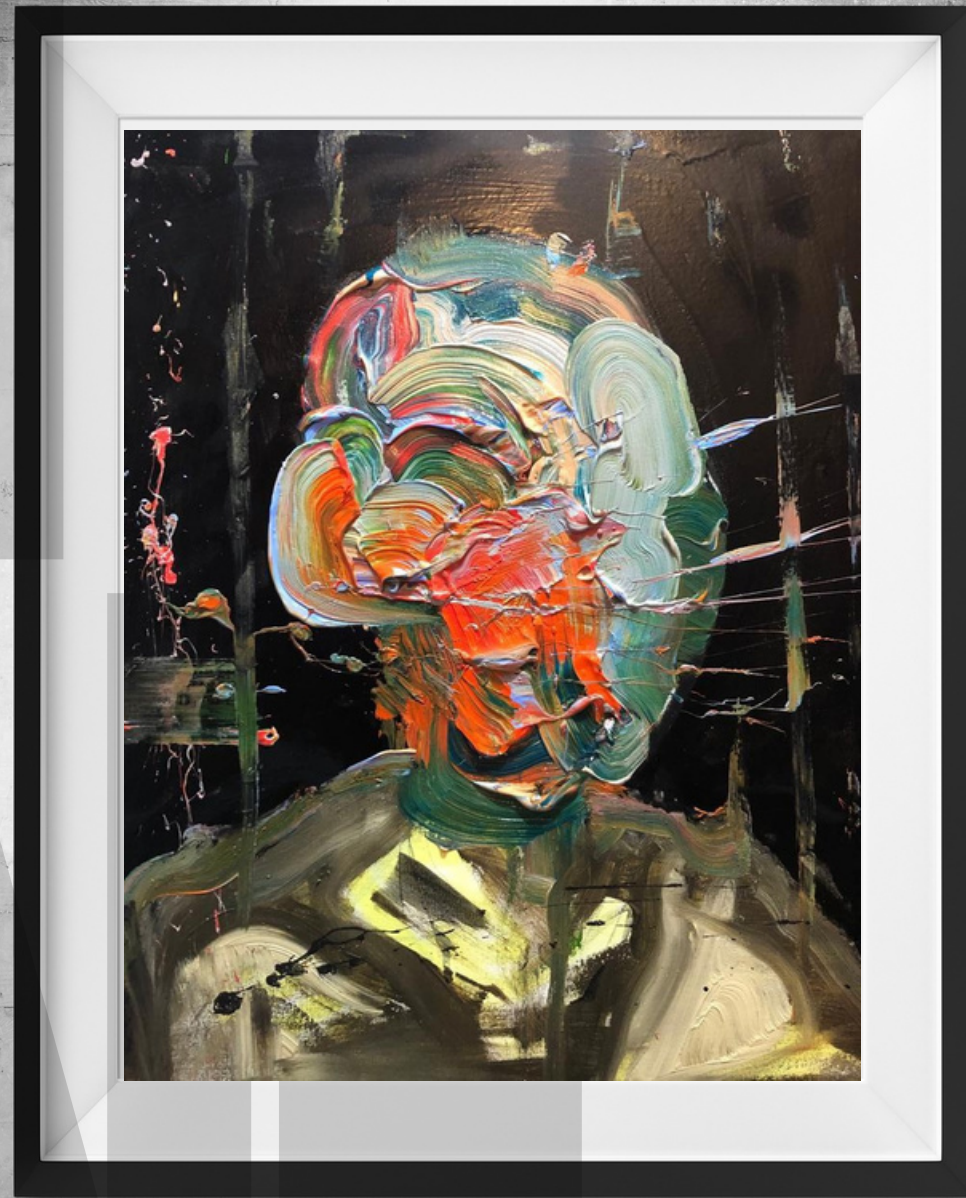
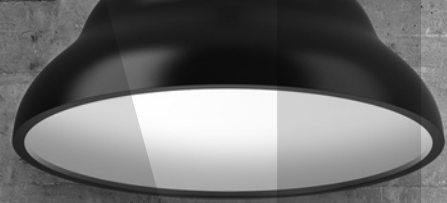
PROVENANCE: Finn Stone's Studio, North London

MATERIALS: Heavy Body Acrylic on Canvas

COLLECTION: Imaginary Portraits

SIZE: 76 x 61 cm

FRAMED / UNFRAMED: Framed





MULTICOLOUR DREAMS

NAME: Multicolour Dreams, 2022

PROVENANCE: Finn Stone's Studio, North London

MATERIALS: Heavy Body Acrylic on Canvas

COLLECTION: Imaginary Portraits

SIZE: 60 x 70 cm

FRAMED / UNFRAMED: Framed



 HENARCH GALLERIES



FINN STONE 



MOON DANCER

NAME: Moon Dancer, 2022

PROVENANCE: Finn Stone's Studio, North London

MATERIALS: Heavy Body Acrylic on Canvas

COLLECTION: Imaginary Portraits

SIZE: 102 x 82 cm

FRAMED / UNFRAMED: Framed





PAINT DREAMER

NAME: Paint Dreamer, 2018

PROVENANCE: Finn Stone's Studio, North London

MATERIALS: Heavy Body Acrylic on Canvas

COLLECTION: Imaginary Portraits

SIZE: 80 x 60 cm

FRAMED / UNFRAMED: Framed



COSMIC DREAM

NAME: Cosmic Dream, 2022

PROVENANCE: Finn Stone's Studio, North London

MATERIALS: Heavy Body Acrylic on Canvas

COLLECTION: Imaginary Portraits

SIZE: 102 x 82 cm

FRAMED / UNFRAMED: Framed



ORBITAL WONDER

NAME: Orbital Wonder, 2022

PROVENANCE: Finn Stone's Studio, North London

MATERIALS: Heavy Body Acrylic on Canvas

COLLECTION: Imaginary Portraits

SIZE: 76 x 61 cm

FRAMED / UNFRAMED: Framed





AQUATIC WONDER

NAME: Aquatic Wonder, 2021

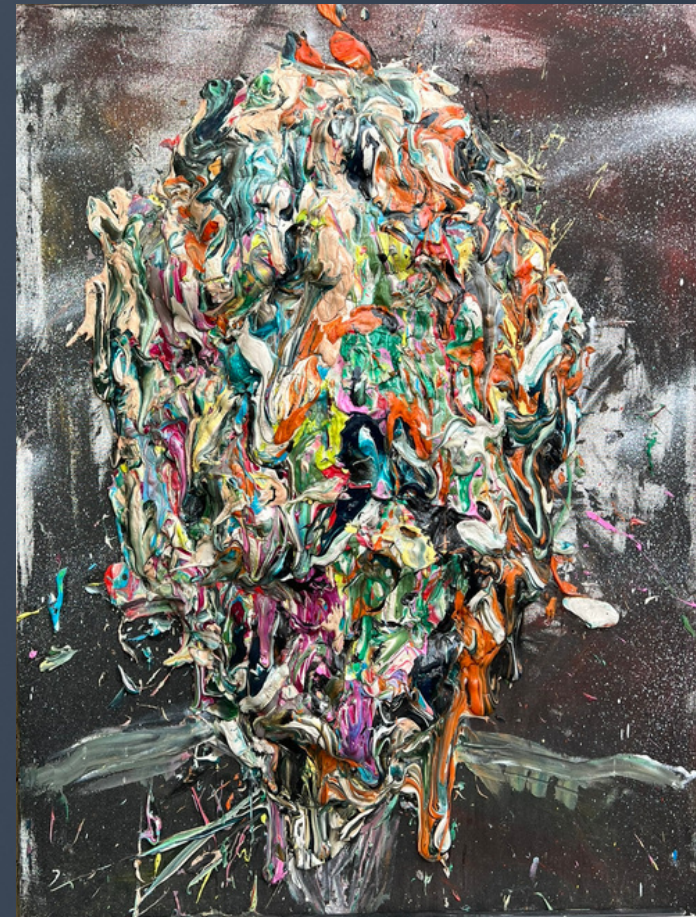
PROVENANCE: Finn Stone's Studio, North London

MATERIALS: Heavy Body Acrylic on Canvas

COLLECTION: Imaginary Portraits

SIZE: 54 x 43 cm

FRAMED / UNFRAMED: Framed





MOVING MINDS

NAME: Moving Minds, 2018

PROVENANCE: Finn Stone's Studio, North London

MATERIALS: Heavy Body Acrylic on Canvas

COLLECTION: Imaginary Portraits

SIZE: 56 x 46 cm

FRAMED / UNFRAMED: Framed



FREE YOUR SOUL

NAME: Free Your Soul, 2018

PROVENANCE: Finn Stone's Studio, North London

MATERIALS: Heavy Body Acrylic on Canvas

COLLECTION: Imaginary Portraits

SIZE: 122 x 92 cm

FRAMED / UNFRAMED: Framed



FREE YOUR MIND

NAME: Free Your Mind, 2018

PROVENANCE: Finn Stone's Studio, North London

MATERIALS: Heavy Body Acrylic on Canvas

COLLECTION: Imaginary Portraits

SIZE: 102 x 78 cm

FRAMED / UNFRAMED: Framed





OCEAN DREAMS

NAME: Ocean Dreams, 2018

PROVENANCE: Finn Stone's Studio, North London

MATERIALS: Heavy Body Acrylic on Canvas

COLLECTION: Imaginary Portraits

SIZE: 76 x 61 cm

FRAMED / UNFRAMED: Framed

THE PRELIMINARY PAINTINGS...

Imagine all the people. Imagine all the people everywhere...

These are Finn's preliminary paintings. They are produced before the main painting- like a sketch- which he places on the side to look at before creating the final artwork.

Finn has created so many paintings over the years, so understandably there are several drafts like these. Some are produced with colour, which are effectively just smaller paintings, but the monochrome versions are quick, raw paint sketches which guide him to produce the shape that he wants.

"It's that feeling of seeing a white canvas. It must be filled. It's just what comes to me, but I imagine the face I am painting which changes each time" - Finn Stone

We felt these were just as beautiful as the final product, and so the original sketches will be available to purchase, as well as limited edition prints.





FINN STONE



IMAGINARY SCULPTURES



 HENARCH GALLERIES



FINN STONE *London.*

How to buy art the smart, easy way

10 payments. 10 months. No Interest.

Enjoy now, pay over time, instead of upfront.

Henarch Galleries have partnered with Art Money to make art more accessible.

Art Money empowers people to buy art, supporting artists, galleries, and a sustainable creative economy.

We provide a commission enabling the no-interest business model. In return, we get paid immediately, the artist gets paid, you take your art to enjoy now and pay over time. Win win.

First, apply!

1. Create your Art Money account online
2. Apply for Art Money Credit (first time clients only) in 5 minutes
3. Get approved in real-time, request a credit limit to suit your art budget

Then, Art Money it

1. Select your artwork (Henarch Galleries will appear in a drop-down menu)
2. Confirm with Henarch Galleries and pay a minimum of 10% deposit- payment 1 of 10 (**Henarch Galleries send you the deposit invoice independently, not through Art Money**)
3. Submit a purchase through your Art Money account, your work will be shipped immediately if you are a collector or stored with Henarch Galleries if you choose to invest. Future payments are monthly auto debits.

Enjoy!





STONNE

Jan Hanc



HENARCH
GALLERIES

ART ADVISORY



PHONE
+44 (0)204 524 7757



EMAIL
info@henarchgalleries.com



WEBSITE
www.henarchgalleries.com



REIGATE ADDRESS
The Courtyard Dover's Farm,
Lonesome Lane, Reigate,
Surrey, RH2 7QT



LONDON ADDRESS
103, The Metal Box Factory,
30 Great Guildford Street,
London, SE1 0HS